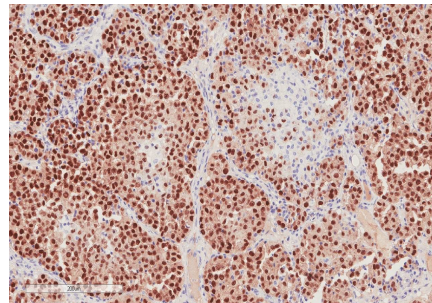
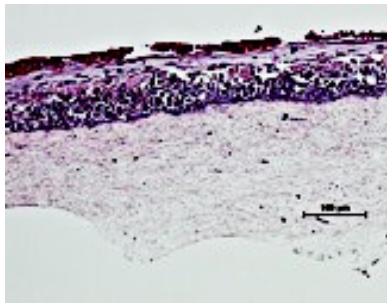
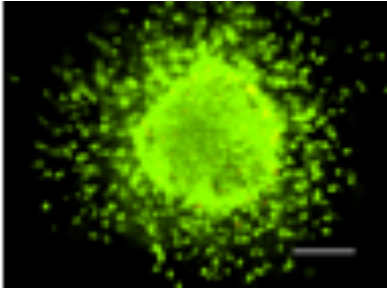


Post-doctoral positions studying cancer immune and targeted therapies

Thomas Jefferson University, Philadelphia



Post-doctoral fellowship positions are available in the laboratory of Dr. Andrew Aplin.

Projects include:

1. Drug tolerant persister cells in melanoma.
2. Inflammatory cell death and alterations in the tumor immune microenvironment.
3. Signaling and epigenetics of ocular/uveal melanoma

The laboratory is funded by P01 and R01 grants from the NIH/NCI, as well as by the Department of Defense and research foundations. It is part of an NCI-designated Cancer Center with access to outstanding core facilities.



We have a diverse and energetic research group that is highly collaborative. Recent trainees have published in high-tier journals, obtained independent funding and established their own independent groups.

More details are available by scanning the QR code.

Applicants should submit a resume to: Andrew.Aplin@Jefferson.edu